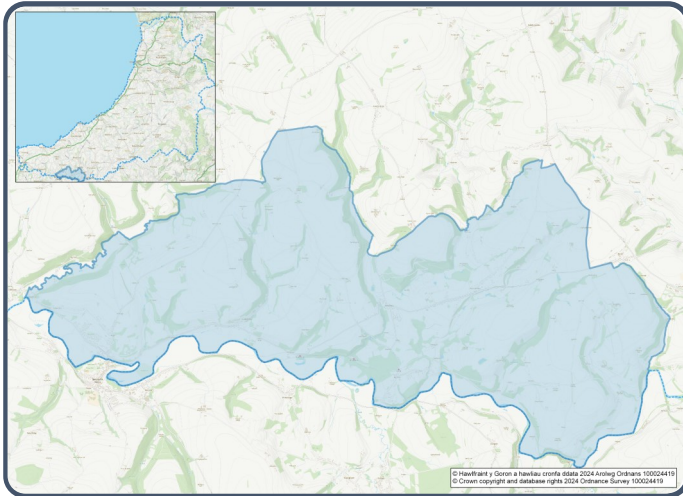


2021 Census Area Profiles – Lower Super Output Area (LSOA) W01000531 - Llandyfriog



Population:



1,764 residents



Females

932



Males

833

Population Change (2011-2021)

-3.9%

61 Students

(people over 16 who are engaged in full-time courses of study in secondary, tertiary or higher education institutions)

12.9% aged 0 - 14

53.5% aged 15 - 64

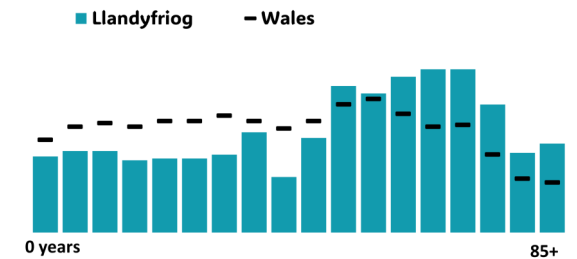
33.6% aged 65+

Age profile

1.6% BAME

98.3% White

0.1% Other Ethnic Group



Health & Disability:



25.0%

Disabled under the Equality Act



10.8%

Day-to-day activities limited a lot



72.4%

In good or very good health



11.6%

Provides unpaid care

Households:



817

Households



3.3%

Households without central heating



56.7%

Households deprived in one or more deprivation dimensions



0.1% Overcrowded Households

Welsh Language:



50.0%

Can speak Welsh

Age breakdown of Welsh speakers

0-15: 8.1%

16-64: 27.5%

65+: 13.2%



39.1%

Have NO skills in Welsh

Economy:



46.4%

Employment Rate



15.8%

Achieving level 2 qualification



52.6%

Economic Inactivity



16.9%

No Qualifications

Demography, Ethnicity, Identity & Religion:

	LSOA		Ceredigion
	No.	%	%
Population			
Population 2021	1,764	-	71,475
Population 2011	1,835	-	75,922
<i>Population change (2011-21)</i>	- 71	- 3.9%	- 5.8%
Population density	59.1	-	40.0
Sex			
Males	833	47.2%	48.9%
Females	932	52.8%	51.1%
Age			
Aged 0 to 4	72	4.1%	3.8%
Aged 5 to 19	224	12.7%	16.1%
Aged 20 to 29	141	8.0%	14.0%
Aged 30 to 44	222	12.6%	13.8%
Aged 45 to 59	363	20.6%	19.3%
Aged 60 to 64	148	8.4%	7.2%
Aged 65 to 74	311	17.6%	13.9%
Aged 75 and over	282	16.0%	11.8%
Country of birth			
Born in UK	1,711	96.9%	92.9%
Born outside of UK	54	3.1%	7.1%
National Identity			
One or more UK identity	1,721	97.4%	93.4%
UK identity and non-UK identity	21	1.2%	1.7%
Non-UK identity	25	1.4%	4.9%
Religion			
Christian	868	49.1%	46.7%
No religion	714	40.4%	43.0%
Other religion	29	1.6%	2.6%

Housing & Household Composition:

	LSOA		Ceredigion
	No	%	%
Tenure			
Owned	612	74.8%	68.6%
Private rented	131	16.0%	20.6%
Social rented	72	8.8%	10.5%
Shared ownership	2	0.2%	0.3%
Lives rent free	1	0.1%	0.0%
Accommodation Type			
Detached	475	58.1%	50.7%
Semi detached	190	23.3%	23.1%
Terraced	113	13.8%	14.1%
Flat, maisonette or apartment	37	4.5%	11.3%
Caravan or other mobile temporary	2	0.2%	0.8%
Household composition			
One person household	270	33.0%	33.0%
Single family household	525	64.1%	60.4%
Other household types	24	2.9%	6.6%
Central Heating			
No central heating	27	3.3%	2.6%
Occupancy Rating			
Overcrowded households	1	0.1%	1.4%
Number of bedrooms			
1 bedroom	39	4.8%	7.4%
2 bedrooms	216	26.4%	23.6%
3 bedrooms	356	43.5%	42.5%
4+ bedrooms	208	25.4%	26.5%
Number of cars or vans			
No car or van	72	8.8%	15.7%
Deprivation			
Households deprived in one or more deprivation dimensions	464	56.7%	52.9%

Labour Market & Education:

	LSOA		Ceredigion
	No	%	%
Economic activity status			
Economically active (in employment)	684	44.9%	46.8%
Economically active (unemployed)	23	1.5%	1.8%
Economically inactive	801	52.6%	47.9%
<i>Retired</i>	569	37.3%	27.7%
<i>Student</i>	45	3.0%	10.0%
<i>Looking after home or family</i>	76	5.0%	3.5%
<i>Long-term sick or disabled</i>	74	4.9%	4.4%
Top 3 Industries			
Public administration, education and health	211	30.5%	35.1%
Distribution, hotels and restaurants	151	21.9%	21.8%
Financial, real estate, professional and administrative activities	74	10.7%	10.5%
Education			
No Qualifications (all aged 16+)	257	16.9%	14.7%
Qualifications Level 2	240	15.8%	13.7%
Apprenticeship	102	6.7%	5.4%
Travel to Work			
Work mainly at/from home	174	25.2%	31.6%
Driving car/van	429	62.1%	51.1%
Bus	6	0.9%	1.3%
On foot	43	6.2%	10.0%