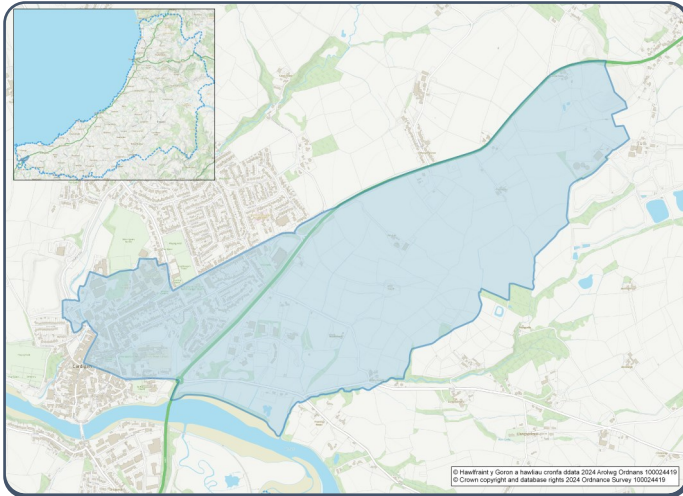


2021 Census Area Profiles – Lower Super Output Area (LSOA) W01000510 - Cardigan - Rhyd-y-Fuwch



Population:



1,182 residents



Females
607



Males
575

Population Change (2011-2021)

▼ **-3.6%**

57 Students

(people over 16 who are engaged in full-time courses of study in secondary, tertiary or higher education institutions)

15.3% aged 0 - 14

59.3% aged 15 - 64

25.4% aged 65+

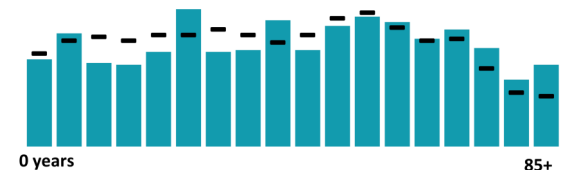
2.7% BAME

97.3% White

0.0% Other Ethnic Group

Age profile

■ Cardigan - Rhyd-y-Fuwch - Wales



Health & Disability:



29.7%

Disabled under the Equality Act



16.2%

Day-to-day activities limited a lot



69.0%

In good or very good health



10.1%

Provides unpaid care

Households:



627 Households



0.8%

Households without central heating



65.7%

Households deprived in one or more deprivation dimensions



0.6% Overcrowded Households

Welsh Language:



47.3%

Can speak Welsh

Age breakdown of Welsh speakers

0-15: 9.5%

16-64: 26.1%

65+: 10.5%



37.6%

Have NO skills in Welsh

Economy:



47.7% Employment Rate



14.8% Achieving level 2 qualification



50.4% Economic Inactivity



22.9% No Qualifications

Demography, Ethnicity, Identity & Religion:

	LSOA		Ceredigion
	No.	%	%
Population			
Population 2021	1,182	-	71,475
Population 2011	1,226	-	75,922
<i>Population change (2011-21)</i>	- 44	- 3.6%	- 5.8%
Population density	576.5	-	40.0
Sex			
Males	575	48.6%	48.9%
Females	607	51.4%	51.1%
Age			
Aged 0 to 4	56	4.7%	3.8%
Aged 5 to 19	177	15.0%	16.1%
Aged 20 to 29	148	12.5%	14.0%
Aged 30 to 44	201	17.0%	13.8%
Aged 45 to 59	222	18.8%	19.3%
Aged 60 to 64	79	6.7%	7.2%
Aged 65 to 74	143	12.1%	13.9%
Aged 75 and over	157	13.3%	11.8%
Country of birth			
Born in UK	1,103	93.3%	92.9%
Born outside of UK	79	6.7%	7.1%
National Identity			
One or more UK identity	1,118	94.6%	93.4%
UK identity and non-UK identity	12	1.0%	1.7%
Non-UK identity	52	4.4%	4.9%
Religion			
Christian	481	40.7%	46.7%
No religion	614	52.0%	43.0%
Other religion	13	1.1%	2.6%

Housing & Household Composition:

	LSOA		Ceredigion
	No	%	%
Tenure			
Owned	251	40.0%	68.6%
Private rented	148	23.6%	20.6%
Social rented	224	35.7%	10.5%
Shared ownership	3	0.5%	0.3%
Lives rent free	1	0.2%	0.0%
Accommodation Type			
Detached	92	14.7%	50.7%
Semi detached	154	24.6%	23.1%
Terraced	212	33.8%	14.1%
Flat, maisonette or apartment	169	27.0%	11.3%
Caravan or other mobile temporary	0	0.0%	0.8%
Household composition			
One person household	329	52.5%	33.0%
Single family household	275	43.9%	60.4%
Other household types	23	3.7%	6.6%
Central Heating			
No central heating	5	0.8%	2.6%
Occupancy Rating			
Overcrowded households	4	0.6%	1.4%
Number of bedrooms			
1 bedroom	159	25.4%	7.4%
2 bedrooms	186	29.7%	23.6%
3 bedrooms	181	28.9%	42.5%
4+ bedrooms	101	16.1%	26.5%
Number of cars or vans			
No car or van	218	34.7%	15.7%
Deprivation			
Households deprived in one or more deprivation dimensions	412	65.7%	52.9%

Labour Market & Education:

	LSOA		Ceredigion
	No	%	%
Economic activity status			
Economically active (in employment)	446	45.1%	46.8%
Economically active (unemployed)	26	2.6%	1.8%
Economically inactive	499	50.4%	47.9%
<i>Retired</i>	258	26.1%	27.7%
<i>Student</i>	40	4.0%	10.0%
<i>Looking after home or family</i>	48	4.8%	3.5%
<i>Long-term sick or disabled</i>	131	13.2%	4.4%
Top 3 Industries			
Distribution, hotels and restaurants	135	29.5%	21.8%
Public administration, education and health	117	25.5%	35.5%
Financial, real estate, professional and administrative activities	55	12.0%	10.5%
Education			
No Qualifications (all aged 16+)	227	22.9%	14.7%
Qualifications Level 2	147	14.8%	13.7%
Apprenticeship	65	6.6%	5.4%
Travel to Work			
Work mainly at/from home	80	17.5%	31.6%
Driving car/van	206	45.0%	51.1%
Bus	8	1.7%	1.3%
On foot	118	25.8%	10.0%