



## Cylchdaith Pontrhydfendigaid Circular

**Dechrau:** Pentref Pontrhydfendigaid

**Addas ar gyfer:** Cerddwyr  
**Arwyneb:** Ffordd, Trac, Porfa  
**Dodrefn:** 4 gât, 16 sticil, 3 bont

**Pellter:** 7 km / 4.3 milltir

**Parcio:** Neuadd y Pentref  
**Cyfleusterau:** Siop, 2 Tafarn

**Trafnidiaeth:** T21 522

**Mapiau:** OS Explorer 213, 187, 199  
OS Landranger 135, 146, 147

**Start:** Village of Pontrhydfendigaid

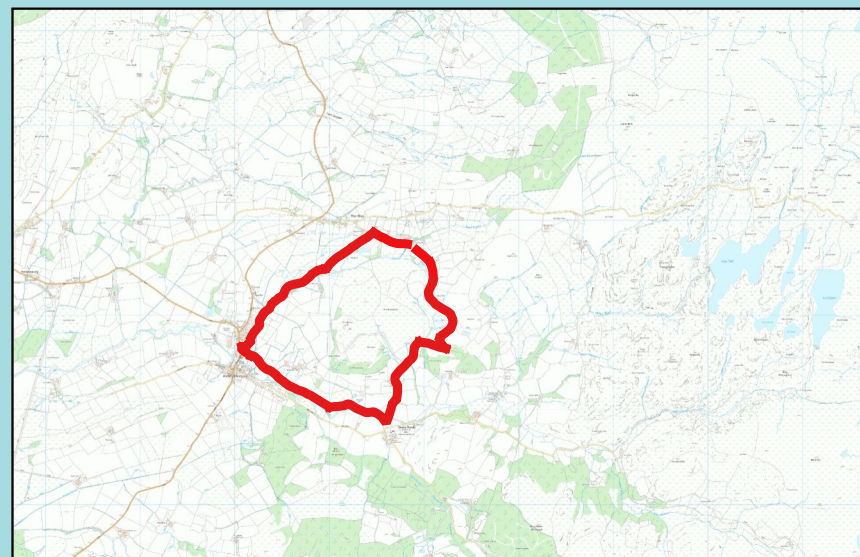
**Suitable for:** Walkers  
**Surface:** Road, Track, Grass  
**Furniture:** 4 gates, 16 stiles, 3 bridges

**Distance:** 7 km / 4.3 miles

**Parking:** Village Hall  
**Amenities:** Shop, 2 Pubs

**Public Transport:** T21 522

**Maps:** OS Explorer 213, 187, 199  
OS Landranger 135, 146, 147



Gellir adrodd unrhyw broblemau y dewch ar eu traws ar Llwybrau Tramwy trwy dudalen "Adrodd Problemau" y Cyngor ar [www.ceredigion.gov.uk](http://www.ceredigion.gov.uk)

Any problems encountered on Rights of Way can be logged on the County Council's "Problem Reporting page" at [www.ceredigion.gov.uk](http://www.ceredigion.gov.uk)

Dilynwch Cod Cefn Gwlad bob amser.  
Gwelwch [www.cyfoethnaturiolcymru.gov.uk](http://www.cyfoethnaturiolcymru.gov.uk)

Always follow the Countryside Code, which can be found at [www.naturalresourceswales.gov.uk](http://www.naturalresourceswales.gov.uk)

