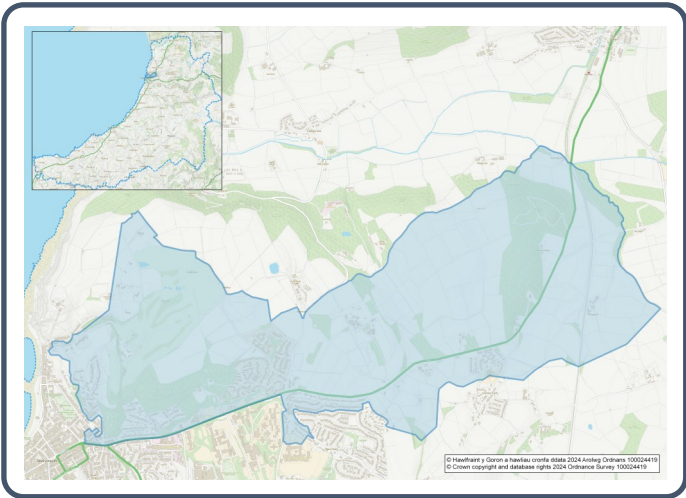


2021 Census Area Profiles – Lower Super Output Area (LSOA) W01002000 - Aberystwyth Penglais 1



Population:



2,921 residents



Females
1,478



Males
1,443

Population Change
(2011-2021)

N/A

(the boundary of this LSOA has changed since 2011)

1,933 Students

(people over 16 who are engaged in full-time courses of study in secondary, tertiary or higher education institutions)

6.0% aged 0 - 14

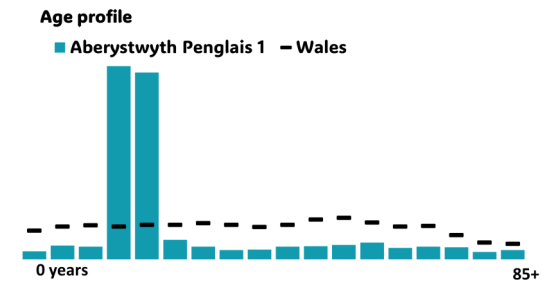
84.4% aged 15 - 64

9.2% aged 65+

7.1% BAME

92.1% White

0.9% Other Ethnic Group



Health & Disability:



22.1%

Disabled under the Equality Act



6.8%

Day-to-day activities limited a lot



85.1%

In good or very good health



6.1%

Provides unpaid care

Households:



528 Households



2.6%

Households without central heating



52.3%

Households deprived in one or more deprivation dimensions



2.3% Overcrowded Households

Welsh Language:



21.8%
Can speak Welsh

Age breakdown of Welsh speakers

0-15: 3.2%

16-64: 14.7%

65+: 3.7%



71.5%
Have NO skills in Welsh

Economy:



15.7%
Employment Rate



6.4%
Achieving level 2 qualification



69.7%
Economic Inactivity



4.4%
No Qualifications

Demography, Ethnicity, Identity & Religion:

	LSOA		Ceredigion
	No.	%	%
Population			
Population 2021	2,921	-	71,475
Population 2011	N/A	-	75,922
Population change (2011-21)	-	-	- 5.8%
Population density	681.3	-	40.0
Sex			
Males	1,443	49.4%	48.9%
Females	1,478	50.6%	51.1%
Age			
Aged 0 to 4	41	1.4%	3.8%
Aged 5 to 19	1,115	38.2%	16.1%
Aged 20 to 29	1,045	35.8%	14.0%
Aged 30 to 44	159	5.5%	13.8%
Aged 45 to 59	203	7.0%	19.3%
Aged 60 to 64	85	2.9%	7.2%
Aged 65 to 74	122	4.2%	13.9%
Aged 75 and over	147	5.0%	11.8%
Country of birth			
Born in UK	2,510	85.9%	92.9%
Born outside of UK	413	14.1%	7.1%
National Identity			
One or more UK identity	2,553	87.3%	93.4%
UK identity and non-UK identity	91	3.1%	1.7%
Non-UK identity	280	9.6%	4.9%
Religion			
Christian	832	28.4%	46.7%
No religion	1,650	56.4%	43.0%
Other religion	114	3.9%	2.6%

Housing & Household Composition:

	LSOA		Ceredigion
	No	%	%
Tenure			
Owned	321	60.8%	68.6%
Private rented	134	25.4%	20.6%
Social rented	70	13.3%	10.5%
Shared ownership	2	0.4%	0.3%
Lives rent free	1	0.2%	0.0%
Accommodation Type			
Detached	201	38.1%	50.7%
Semi detached	121	22.9%	23.1%
Terraced	111	21.0%	14.1%
Flat, maisonette or apartment	94	17.8%	11.3%
Caravan or other mobile temporary	1	0.2%	0.8%
Household composition			
One person household	165	31.2%	33.0%
Single family household	296	56.0%	60.4%
Other household types	68	12.9%	6.6%
Central Heating			
No central heating	14	2.6%	2.6%
Occupancy Rating			
Overcrowded households	12	2.3%	1.4%
Number of bedrooms			
1 bedroom	35	6.6%	7.4%
2 bedrooms	102	19.4%	23.6%
3 bedrooms	205	38.9%	42.5%
4+ bedrooms	185	35.1%	26.5%
Number of cars or vans			
No car or van	119	22.5%	15.7%
Deprivation			
Households deprived in one or more deprivation dimensions	275	52.3%	52.9%

Labour Market & Education:

	LSOA		Ceredigion
	No	%	%
Economic activity status			
Economically active (in employment)	417	15.2%	46.8%
Economically active (unemployed)	12	0.4%	1.8%
Economically inactive	1,909	69.7%	47.9%
<i>Retired</i>	282	10.3%	27.7%
<i>Student</i>	1,535	56.1%	10.0%
<i>Looking after home or family</i>	40	1.5%	3.5%
<i>Long-term sick or disabled</i>	26	0.9%	4.4%
Top 3 Industries			
Public administration, education and health	239	38.4%	35.1%
Distribution, hotels and restaurants	185	29.7%	21.8%
Other	59	9.5%	5.4%
Education			
No Qualifications (all aged 16+)	121	4.4%	14.7%
Qualifications Level 2	175	6.4%	13.7%
Apprenticeship	42	1.5%	5.4%
Travel to Work			
Work mainly at/from home	231	37.1%	31.6%
Driving car/van	210	33.7%	51.1%
Bus	9	1.4%	1.3%
On foot	121	19.4%	10.0%