

Welcome



This is our third newsletter for the Aberaeron Coastal Defence Scheme which aims to provide an overview of the upcoming works.

If you would like to view our newsletters please scan:

English:



Welsh:



Construction of Pwll Cam terrace wall, ready for masonry cladding and glass panels

BAM will be working in partnership with Ceredigion County Council and AtkinsRéalis Design Consultancy to deliver Aberaeron Coastal Defence Scheme.

Traffic and pedestrian management

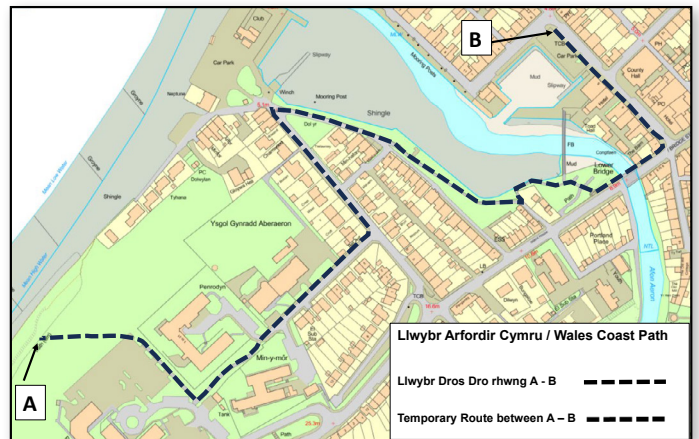


We are making every effort to minimise our impact on residents and visitors to Aberaeron while we work on the flood defences. However, there is a need to manage traffic and pedestrians in order to allow us safe working areas and protect the public. The temporary restrictions will remain in place until the end of the project.

The temporary coastal path diversion through Aberaeron will remain in place until the project is complete. Please see the diagram below that highlights the diversion. The diversion turns up onto Wellington Street from Harbour Lane and turns onto Wellington Gardens up to Ceredigion County Council Penmorfa offices through the car park, to the left of BAM construction site compound.



Quay Parade - Formation footing for the replacement wall



Llwybr Arfordir Cymru / Wales Coast Path
Llwybr Dros Dro rhwng A - B
Temporary Route between A - B

What have we been doing?



- » We continue to receive rock deliveries by sea, stockpiling along the South Beach and at the North Breakwater.
- » Removal of the groynes from South Beach.
- » Commence construction of the North Breakwater.
- » Commence reconstruction of the South Beach rock revetment.
- » Drain the Pwll Cam Inner Harbour and create access within.
- » Excavation and construction of the new harbour gate base slab.
- » Commence excavation and construction of the Pwll Cam Terrace wall.
- » Grouting to Quay Parade harbour walls.
- » Demolition of the South Pier Head.
- » Excavation and construction of Quay Parade flood wall.
- » Excavation and construction of the new concrete base to the South Pier Head.
- » Building River Aeron wall new capping beam.
- » Commence installation of new timber groynes at South Beach.
- » Commence construction of Pwll Cam Harbour Gate abutment walls.

Key upcoming works



August:

- » Masonry cladding starting at Pwll Cam Terrace, River Aeron Wall and Quay Parade walls.
- » Construction of the North Breakwater.
- » Reconstruction of the South Beach rock revetment.
- » Construction of the new harbour gate base slab and abutments.
- » Excavation and building of the new South Pier foundation.
- » Building Quay Parade reinforced concrete wall.
- » Commence timber groynes installation.

September:

- » Masonry cladding starting at Pwll Cam Terrace, River Aeron Wall and Quay Parade walls
- » Construction of the North Breakwater.
- » Reconstruction of the South Beach Rock revetment.
- » Construction of the new harbour gate abutments.
- » Excavation and building of the new South Pier foundation.
- » Full road closure at Quay Parade with installation of main line drainage.

- » Building Quay Parade reinforced concrete wall.
- » Timber Groynes installation.
- » Start glass panels installation – River Aeron, Pwll Cam Terrace.

October:

- » Masonry cladding at Pwll Cam Terrace, River Aeron Wall and Quay Parade walls.
- » Construction of the North Breakwater.
- » Reconstruction of the South Beach rock revetment.

- » Construction of the new harbour gate abutments.
- » Complete building of the new South Pier foundation.
- » Full road closure at Quay Parade with installation of main line drainage.
- » Building Quay Parade reinforced concrete wall.
- » Timber groynes installation.
- » Glass Panels installation – Pwll Cam Terrace and Quay Parade.

Community Benefits and Engagement



Public Drop In Event

Aberaeron Coastal Defence Project

Members of the public are invited to our third 'Public Drop In' Event.

2nd October 2024
12:00-2:00pm
at Aberaeron County Hall

Please come along if you would like to learn more about the project or have any questions you would like to raise with our Public Liaison Officer.

The £31m scheme will be funded through a £26.85m contribution from the Welsh Government's Coastal Risk Management Programme, together with a £4.74m contribution from Ceredigion County Council.

Making Possible



Community Benefits and Engagement



Min Y Mor

Residential Home

Residents from Min Y Mor Residential Home, were invited to attend a presentation on the coastal defence project, where they learnt about the project and had the opportunity to ask questions.



Aberaeron Cymdeithas Society



Gwen Clements, Public Liaison Officer / Corporate Member of the Society was invited along to Aberaeron Cymdeithas Society's Annual General Meeting to provide an overview of the Aberaeron Coastal Defence scheme. Members of the Society were keen to learn about the project and took the opportunity to raise questions and address any concerns.

BAM produced a montage of historical photographs of Aberaeron harbour taken from the vast selection on the Cymdeithas website. The selection of photographs has been displayed at Aberaeron County hall for visitors and members of the public to see a snapshot of the history of Aberaeron harbour.

Ysgol Gynradd Aberaeron School

BAM Public Liaison Officer and Stem Ambassadors visited Ysgol Gynradd Aberaeron school to raise awareness about the dangers in and around construction sites. BAM compound site is located next to the school playground, so it is important that everyone understands the danger of a construction site and surrounding areas.

BAM set the pupils (aged 4-11 years old) a challenge to draw a poster, highlighting the dangers in construction. The winning posters have been displayed at Pwll Cam Harbour in the town Centre.

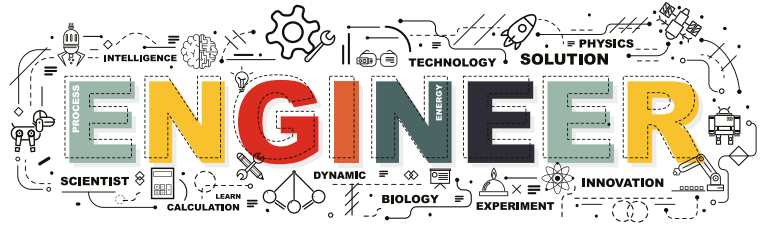


Community Benefits and Engagement



Local School Visits

BAM has been engaging with local schools and groups to talk about careers in civil engineering and the different avenues and opportunities there are. Each session was delivered by a qualified Engineer and an apprentice who are both employed by BAM and are working on the Aberaeron Coastal Defence project. Students learnt about the different routes into civil engineering and required qualifications.



BAM has delivered presentations to:

- » Aberaeron GCSE Engineering, Construction, Design class.
- » Ceredigion Homeschooling Group.
- » Ray Ceredigion Youth Group.

A snapshot of the feedback received from the local community

“The BAM workers working on the harbour wall outside the Harbourmaster are a great bunch and have been very helpful and cooperative. They have also been very informative with the tourists that are constantly asking them questions.”

Harbourmaster Hotel

“The kind donation from BAM is very welcomed and will enable us to increase our planting around Pwll Cam this summer. The harbour defence works are critical to Aberaeron’s future.”

Rhodri Jones,
Aberaeron Town Mayor

“We are absolutely delighted with the support that BAM has provided the school so far. Without prompt, we have had new picnic benches to replace broken ones and they have also provided sand for us to fill out rabbit holes so that we have a safer sports day!

They have also been to see us at school and have held a poster designing competition and came to present the children at school.

We feel that we have an excellent relationship with the company and all the staff who pass the school are polite and respectful.”

Ysgol Gynradd Aberaeron

“BAM’s presentation was outstanding, and I’m sure all pupils obtained a greater insight into the Engineering field, as I certainly did.”

Careers Wales

“I would like to thank BAM and your team of employees for the patience and supportive manner they have shown towards the tenants of Penrodyn. They have taken time to engage with the tenants and explain to them what is going on just outside their front doors, and they have dealt with any issues promptly. They are great ambassadors for your company.”

Penrodyn Residential Home



Community Benefits and Engagement



BAM is committed to supporting the local community and have sponsored many local events and sporting clubs in Aberaeron.



BAM donated to Aberaeron Town Council for the planting at Pwll Cam Harbour



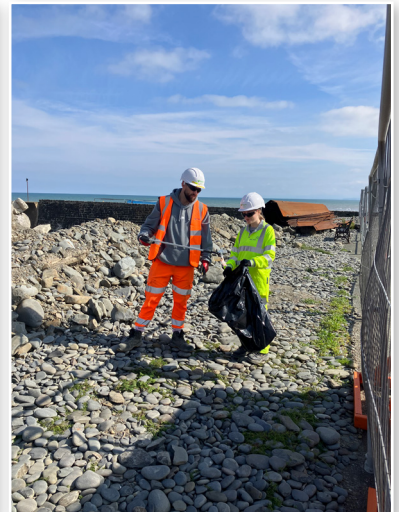
BAM donation towards 'Aeron Stars' 2024 production Sister Act Jr

BAM donates two wooden picnic benches to Ysgol Gynradd Aberaeron School Council



BAM donation of two wooden planters to the residents of Penrodyn Residential home

A group of BAM employees volunteered to embark on a litter pick in and around Aberaeron town recently



Meet the team



We asked some of the team working on the Aberaeron Coastal Defence to tell us about their tasks in a typical day.



Ray Jones - Contracts Manager

- » Client Liaison.
- » Staff resourcing to ensure excellent project delivery.
- » Staff development to ensure we have the best performing team.
- » Overview of project performance including Safety, Wellbeing & Environment.



Nathan Bayliss - Yard Manager

- » Manages the stores and tools on site.
- » Manages the plant and machinery on site.
- » Co-ordinates all site deliveries into site.



Ben Kneeshaw - Site Engineer

- » Set out project works according to designs and specification.
- » Survey new and existing infrastructure for design and records.
- » Monitor quality of works and keep quality records.
- » Produce method statements and risk assessments for site operations.



Andy Pointon-Bell - Project Manager

- » To ensure we have proper resource, supervision and facilities in place to carry out our work safely, while minimising the impact on the public and environment.
- » Arranges our activities into a sequence to deliver the work on time, within the constraints of the site.
- » Strives for cost effective engineering solutions to construction problems.
- » Identifies opportunities for the team to continue to develop their skills.



Martin Davies - Sub Agent

- » Manage the construction phase to achieve required project delivery.
- » Client interface and engage with other stakeholders where necessary.
- » Ensure production and implementation of project plans Activity Plans and Inspection Test Plans in line with company procedures.



Construction gallery



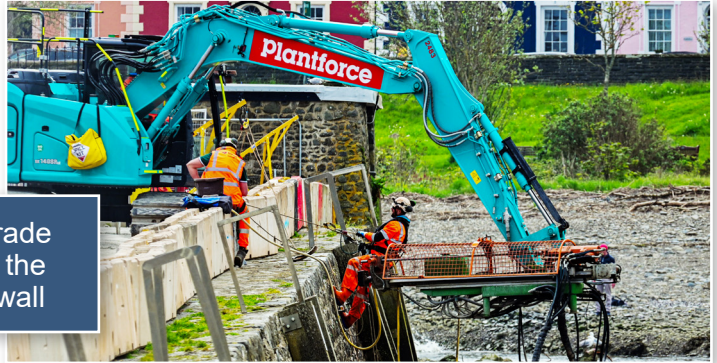
Barge - Selina unloading the rock armour from the barge



South Beach aerial view of temporary rock stockpile and access road



Quay Parade Grouting the harbour wall



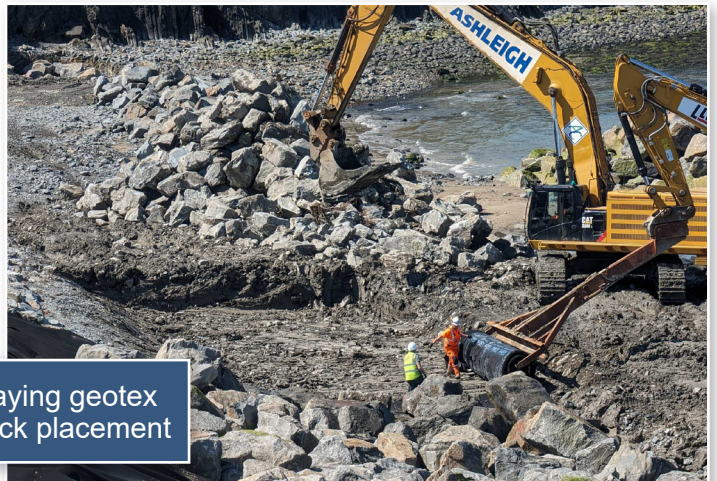
North Pier Building the breakwater



River Aeron - Installing concrete capping beam



South Beach - Laying geotex underneath the rock placement



OUR TEAM



Contracts Manager

Ray Jones

Project Manager

Andrew Pointon-Bell

Quantity Surveyor

Abby Davies

Works Manager

Keith Hughes

General Foreman

Damion Hopkins

Site Agent

Emyr Thomas

Public Liaison Officer

Gwen Clements

Environmental Advisor

John Clancy

OUR PARTNERS

Ceredigion County

Council:

Project Manager

Alan Haird

AtkinsRéalis Design

Consultancy:

Project Manager

Steffan Davies

Design Manager

Matthew Tierney

We are BAM



We imagine, create and enrich buildings and infrastructure across the UK & Ireland. For over 150 years, we've dedicated ourselves to enhancing lives by creating sustainable environments and communities where people can live, work and thrive.

Our vision is to build a sustainable tomorrow. That's why we think beyond the build and focus on the bigger impact. It's how we make the iconic buildings and infrastructure that shape our society.

Restless in our pursuit of better, we work collaboratively with our partners to unlock what's possible, together. That's because we believe in actions, not words.

And that's why we're on a mission to make possible.

Environment and community



Through the adoption of a responsible and proactive attitude to environmental issues BAM is committed to minimising any potentially harmful effects of its business activities on the environment and contributing to sustainable development through balancing its business aims with environmental considerations. BAM will comply with, and where possible, exceed legal and other requirements to which it subscribes, in relation to its environmental aspects and engaging communities in the project.

Considerate Constructors



All BAM sites register with the Considerate Constructors Scheme. This means we are committed to being a good neighbour and to being clean, respectful, safe, environmentally conscious, responsible, and accountable. Our site is independently inspected to make sure we live up to these aims.

We try to work in a way that causes as little inconvenience as possible to our neighbours. We apologise for any unavoidable nuisance that may be caused during the work.

Contact Us

It is our intention to complete these works with minimal disruption. However, if you have any concerns, please contact our Public Liaison Officer who is available to assist.

Gwen Clements:



07585 633799



Aberaeron.plo@bam.com

You can sign up for email updates by emailing aberaeron.plo@bam.com and confirming that you would like to receive updates and a copy of future Newsletters.

For more information about BAM:

Scan here

