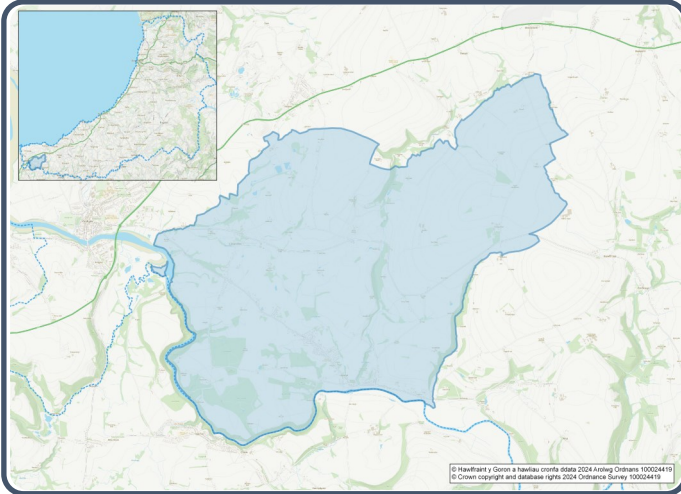


2021 Census Area Profiles – Lower Super Output Area (LSOA) W0100546 - Pen-parc 1



Population:



1,136 residents



Females
587



Males
549

Population Change
(2011-2021)
+0.7%

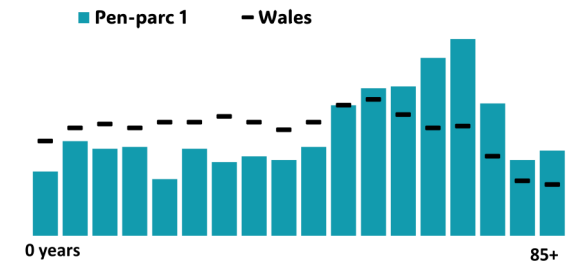
36 Students

(people over 16 who are engaged in full-time courses of study in secondary, tertiary or higher education institutions)

13.0% aged 0 - 14
51.7% aged 15 - 64
35.3% aged 65+

1.5% BAME
98.4% White
0.1% Other Ethnic Group

Age profile



Health & Disability:



24.0%
Disabled under the Equality Act



10.3%
Day-to-day activities limited a lot



76.2%
In good or very good health



11.5%
Provides unpaid care

Households:



546 Households



1.7%
Households without central heating



56.0%

Households deprived in one or more deprivation dimensions



0.5% Overcrowded Households

Welsh Language:



45.5%
Can speak Welsh

Age breakdown of Welsh speakers

0-15: 8.9%

16-64: 23.7%

65+: 11.8%



43.1%
Have NO skills in Welsh

Economy:



46.7%
Employment Rate



14.5%
Achieving level 2 qualification



52.7%
Economic Inactivity



15.6%
No Qualifications

Demography, Ethnicity, Identity & Religion:

	LSOA		Ceredigion
	No.	%	%
Population			
Population 2021	1,136	-	71,475
Population 2011	1,128	-	75,922
<i>Population change (2011-21)</i>	+8	+0.7%	- 5.8%
Population density	58.8	-	40.0
Sex			
Males	549	48.3%	48.9%
Females	587	51.7%	51.1%
Age			
Aged 0 to 4	39	3.4%	3.8%
Aged 5 to 19	162	14.2%	16.1%
Aged 20 to 29	86	7.6%	14.0%
Aged 30 to 44	137	12.0%	13.8%
Aged 45 to 59	222	19.5%	19.3%
Aged 60 to 64	90	7.9%	7.2%
Aged 65 to 74	225	19.8%	13.9%
Aged 75 and over	176	15.5%	11.8%
Country of birth			
Born in UK	1,100	96.7%	92.9%
Born outside of UK	37	3.3%	7.1%
National Identity			
One or more UK identity	1,109	97.4%	93.4%
UK identity and non-UK identity	9	0.8%	1.7%
Non-UK identity	21	1.8%	4.9%
Religion			
Christian	540	47.5%	46.7%
No religion	496	43.7%	43.0%
Other religion	19	1.7%	2.6%

Housing & Household Composition:

	LSOA		Ceredigion
	No	%	%
Tenure			
Owned	398	73.3%	68.6%
Private rented	72	13.3%	20.6%
Social rented	72	13.3%	10.5%
Shared ownership	1	0.2%	0.3%
Lives rent free	0	0.0%	0.0%
Accommodation Type			
Detached	350	64.1%	50.7%
Semi detached	134	24.5%	23.1%
Terraced	34	6.2%	14.1%
Flat, maisonette or apartment	26	4.8%	11.3%
Caravan or other mobile temporary	2	0.4%	0.8%
Household composition			
One person household	197	36.3%	33.0%
Single family household	316	58.2%	60.4%
Other household types	30	5.5%	6.6%
Central Heating			
No central heating	9	1.7%	2.6%
Occupancy Rating			
Overcrowded households	3	0.5%	1.4%
Number of bedrooms			
1 bedroom	26	4.8%	7.4%
2 bedrooms	138	25.2%	23.6%
3 bedrooms	236	43.1%	42.5%
4+ bedrooms	147	26.9%	26.5%
Number of cars or vans			
No car or van	54	9.9%	15.7%
Deprivation			
Households deprived in one or more deprivation dimensions	305	56.0%	52.9%

Labour Market & Education:

	LSOA		Ceredigion
	No	%	%
Economic activity status			
Economically active (in employment)	438	44.7%	46.8%
Economically active (unemployed)	19	1.9%	1.8%
Economically inactive	516	52.7%	47.9%
<i>Retired</i>	366	37.4%	27.7%
<i>Student</i>	32	3.3%	10.0%
<i>Looking after home or family</i>	44	4.5%	3.5%
<i>Long-term sick or disabled</i>	40	4.1%	4.4%
Top 3 Industries			
Public administration, education and health	106	23.9%	35.1%
Distribution, hotels and restaurants	105	23.7%	21.8%
Financial, real estate, professional and administrative activities	63	14.2%	10.5%
Education			
No Qualifications (all aged 16+)	152	15.6%	14.7%
Qualifications Level 2	142	14.5%	13.7%
Apprenticeship	60	6.1%	5.4%
Travel to Work			
Work mainly at/from home	151	34.2%	31.6%
Driving car/van	245	55.4%	51.1%
Bus	6	1.4%	1.3%
On foot	12	2.7%	10.0%