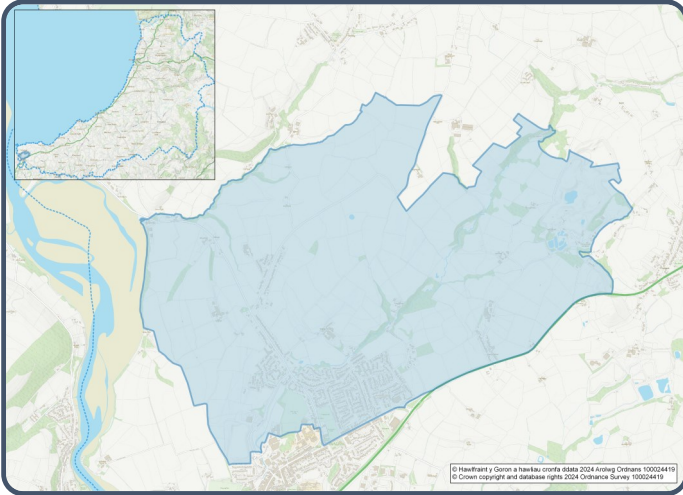


2021 Census Area Profiles – Lower Super Output Area (LSOA) W01000509 - Cardigan– Mwldan



Population:



1,862 residents



Females
1,011



Males
850

Population Change (2011-2021)

+4.4%

81 Students

(people over 16 who are engaged in full-time courses of study in secondary, tertiary or higher education institutions)

14.4% aged 0 - 14

50.8% aged 15 – 64

34.7% aged 65+

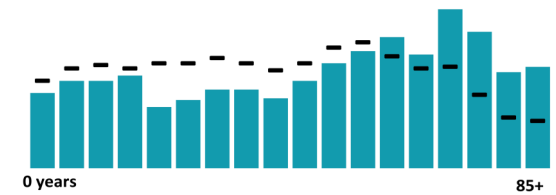
2.1% BAME

97.5% White

0.4% Other Ethnic Group

Age profile

■ Cardigan - Mwldan - Wales



Health & Disability:



25.7%

Disabled under the Equality Act



12.4%

Day-to-day activities limited a lot



74.0%

In good or very good health



11.5%

Provides unpaid care

Households:



887 Households



0.9%

Households without central heating



57.6%

Households deprived in one or more deprivation dimensions



1.1% Overcrowded Households

Welsh Language:



54.8%
Can speak Welsh

Age breakdown of Welsh speakers

0-15: 10.4%

16-64: 25.6%

65+: 17.7%



31.3%
Have NO skills in Welsh

Economy:



42.7%
Employment Rate



18.1%
Achieving level 2 qualification



56.0%
Economic Inactivity



20.1%
No Qualifications

Demography, Ethnicity, Identity & Religion:

	LSOA		Ceredigion
	No.	%	%
Population			
Population 2021	1,862	-	71,475
Population 2011	1,784	-	75,922
<i>Population change (2011-21)</i>	+78	+ 4.4%	- 5.8%
Population density	304.4	-	40.0
Sex			
Males	850	45.7%	48.9%
Females	1,011	54.3%	51.1%
Age			
Aged 0 to 4	81	4.3%	3.8%
Aged 5 to 19	287	15.4%	16.1%
Aged 20 to 29	139	7.5%	14.0%
Aged 30 to 44	241	12.9%	13.8%
Aged 45 to 59	329	17.7%	19.3%
Aged 60 to 64	139	7.5%	7.2%
Aged 65 to 74	291	15.6%	13.9%
Aged 75 and over	356	19.1%	11.8%
Country of birth			
Born in UK	1,783	95.9%	92.9%
Born outside of UK	77	4.1%	7.1%
National Identity			
One or more UK identity	1,801	96.6%	93.4%
UK identity and non-UK identity	15	0.8%	1.7%
Non-UK identity	48	2.6%	4.9%
Religion			
Christian	1,003	54.0%	46.7%
No religion	727	39.1%	43.0%
Other religion	20	1.1%	2.6%

Housing & Household Composition:

	LSOA		Ceredigion
	No	%	%
Tenure			
Owned	617	69.4%	68.6%
Private rented	109	12.3%	20.6%
Social rented	162	18.2%	10.5%
Shared ownership	1	0.1%	0.3%
Lives rent free	0	0.0%	0.0%
Accommodation Type			
Detached	409	46.1%	50.7%
Semi detached	311	35.0%	23.1%
Terraced	89	10.0%	14.1%
Flat, maisonette or apartment	76	8.6%	11.3%
Caravan or other mobile temporary	3	0.3%	0.8%
Household composition			
One person household	329	37.1%	33.0%
Single family household	527	59.5%	60.4%
Other household types	30	3.4%	6.6%
Central Heating			
No central heating	8	0.9%	2.6%
Occupancy Rating			
Overcrowded households	10	1.1%	1.4%
Number of bedrooms			
1 bedroom	31	3.5%	7.4%
2 bedrooms	199	22.5%	23.6%
3 bedrooms	470	53.0%	42.5%
4+ bedrooms	186	21.0%	26.5%
Number of cars or vans			
No car or van	168	18.9%	15.7%
Deprivation			
Households deprived in one or more deprivation dimensions	512	57.6%	52.9%

Labour Market & Education:

	LSOA		Ceredigion
	No	%	%
Economic activity status			
Economically active (in employment)	637	40.7%	46.8%
Economically active (unemployed)	32	2.0%	1.8%
Economically inactive	877	56.0%	47.9%
<i>Retired</i>	616	39.3%	27.7%
<i>Student</i>	62	4.0%	10.0%
<i>Looking after home or family</i>	64	4.1%	3.5%
<i>Long-term sick or disabled</i>	109	7.0%	4.4%
Top 3 Industries			
Public administration, education and health	218	33.2%	35.1%
Distribution, hotels and restaurants	162	24.7%	21.8%
Financial, real estate, professional and administrative activities	75	11.4%	10.5%
Education			
No Qualifications (all aged 16+)	315	20.1%	14.7%
Qualifications Level 2	284	18.1%	13.7%
Apprenticeship	97	6.2%	5.4%
Travel to Work			
Work mainly at/from home	139	21.2%	31.6%
Driving car/van	375	57.3%	51.1%
Bus	8	1.2%	1.3%
On foot	93	14.2%	10.0%