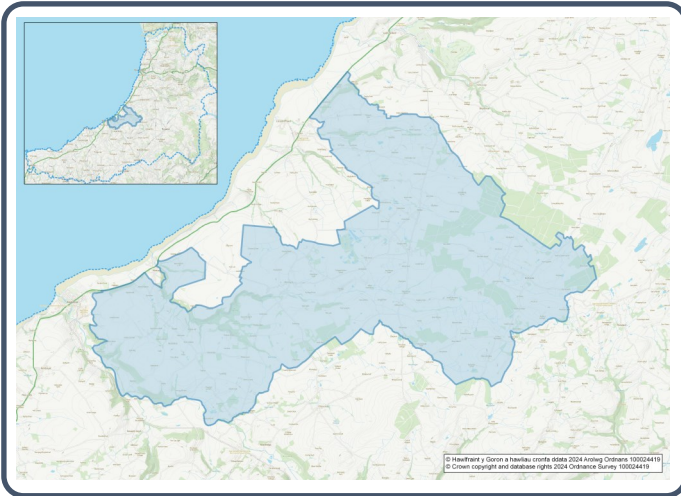


2021 Census Area Profiles – Lower Super Output Area (LSOA) W01000539 - Llansantffraed 1



Population:



1,187 residents



Females

579



Males

608

Population Change (2011-2021)

-2.9%

35 Students

(people over 16 who are engaged in full-time courses of study in secondary, tertiary or higher education institutions)

11.0% aged 0 - 14

58.4% aged 15 - 64

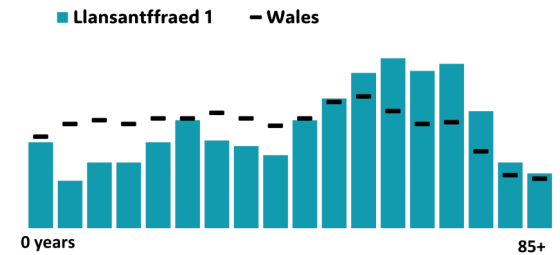
30.7% aged 65+

2.1% BAME

97.9% White

0.0% Other Ethnic Group

Age profile



Health & Disability:



21.3%

Disabled under the Equality Act



9.6%

Day-to-day activities limited a lot



78.5%

In good or very good health



11.3%

Provides unpaid care

Households:



513

Households



2.9%

Households without central heating



50.5%

Households deprived in one or more deprivation dimensions



1.8% Overcrowded Households

Welsh Language:



46.5%

Can speak Welsh

Age breakdown of Welsh speakers

0-15: 6.7%

16-64: 29.1%

65+: 9.4%



43.3%

Have NO skills in Welsh

Economy:



55.7%

Employment Rate



14.6%

Achieving level 2 qualification



43.2%

Economic Inactivity



17.8%

No Qualifications

Demography, Ethnicity, Identity & Religion:

	LSOA		Ceredigion
	No.	%	%
Population			
Population 2021	1,187	-	71,475
Population 2011	1,222	-	75,922
<i>Population change (2011-21)</i>	- 35	- 2.9%	- 5.8%
Population density	25.0	-	40.0
Sex			
Males	608	51.2%	48.9%
Females	579	48.8%	51.1%
Age			
Aged 0 to 4	56	4.7%	3.8%
Aged 5 to 19	117	9.9%	16.1%
Aged 20 to 29	126	10.6%	14.0%
Aged 30 to 44	159	13.4%	13.8%
Aged 45 to 59	255	21.5%	19.3%
Aged 60 to 64	110	9.3%	7.2%
Aged 65 to 74	209	17.6%	13.9%
Aged 75 and over	155	13.1%	11.8%
Country of birth			
Born in UK	1,141	96.1%	92.9%
Born outside of UK	46	3.9%	7.1%
National Identity			
One or more UK identity	1,155	97.2%	93.4%
UK identity and non-UK identity	8	0.7%	1.7%
Non-UK identity	25	2.1%	4.9%
Religion			
Christian	591	49.7%	46.7%
No religion	471	39.6%	43.0%
Other religion	13	1.1%	2.6%

Housing & Household Composition:

	LSOA		Ceredigion
	No	%	%
Tenure			
Owned	438	85.5%	68.6%
Private rented	69	13.5%	20.6%
Social rented	5	1.0%	10.5%
Shared ownership	0	0.0%	0.3%
Lives rent free	0	0.0%	0.0%
Accommodation Type			
Detached	415	81.2%	50.7%
Semi detached	66	12.9%	23.1%
Terraced	14	2.7%	14.1%
Flat, maisonette or apartment	10	2.0%	11.3%
Caravan or other mobile temporary	6	1.2%	0.8%
Household composition			
One person household	134	26.2%	33.0%
Single family household	338	66.0%	60.4%
Other household types	40	7.8%	6.6%
Central Heating			
No central heating	15	2.9%	2.6%
Occupancy Rating			
Overcrowded households	9	1.8%	1.4%
Number of bedrooms			
1 bedroom	19	3.7%	7.4%
2 bedrooms	86	16.7%	23.6%
3 bedrooms	263	51.2%	42.5%
4+ bedrooms	146	28.4%	26.5%
Number of cars or vans			
No car or van	31	6.0%	15.7%
Deprivation			
Households deprived in one or more deprivation dimensions	259	50.5%	52.9%

Labour Market & Education:

	LSOA		Ceredigion
	No	%	%
Economic activity status			
Economically active (in employment)	575	54.6%	46.8%
Economically active (unemployed)	12	1.1%	1.8%
Economically inactive	455	43.2%	47.9%
<i>Retired</i>	334	31.7%	27.7%
<i>Student</i>	26	2.5%	10.0%
<i>Looking after home or family</i>	39	3.7%	3.5%
<i>Long-term sick or disabled</i>	32	3.0%	4.4%
Top 3 Industries			
Public administration, education and health	176	30.1%	35.1%
Distribution, hotels and restaurants	110	18.8%	21.8%
Agriculture, energy and water	96	16.4%	9.0%
Education			
No Qualifications (all aged 16+)	187	17.8%	14.7%
Qualifications Level 2	153	14.6%	13.7%
Apprenticeship	66	6.3%	5.4%
Travel to Work			
Work mainly at/from home	238	40.8%	31.6%
Driving car/van	298	51.1%	51.1%
Bus	3	0.5%	1.3%
On foot	22	3.8%	10.0%