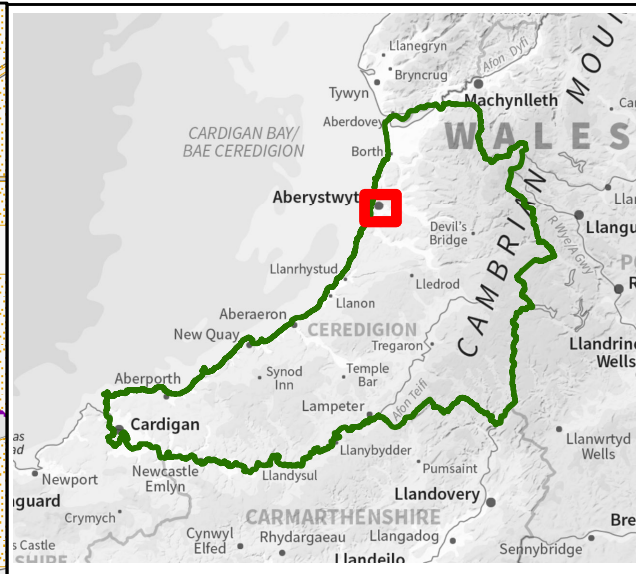
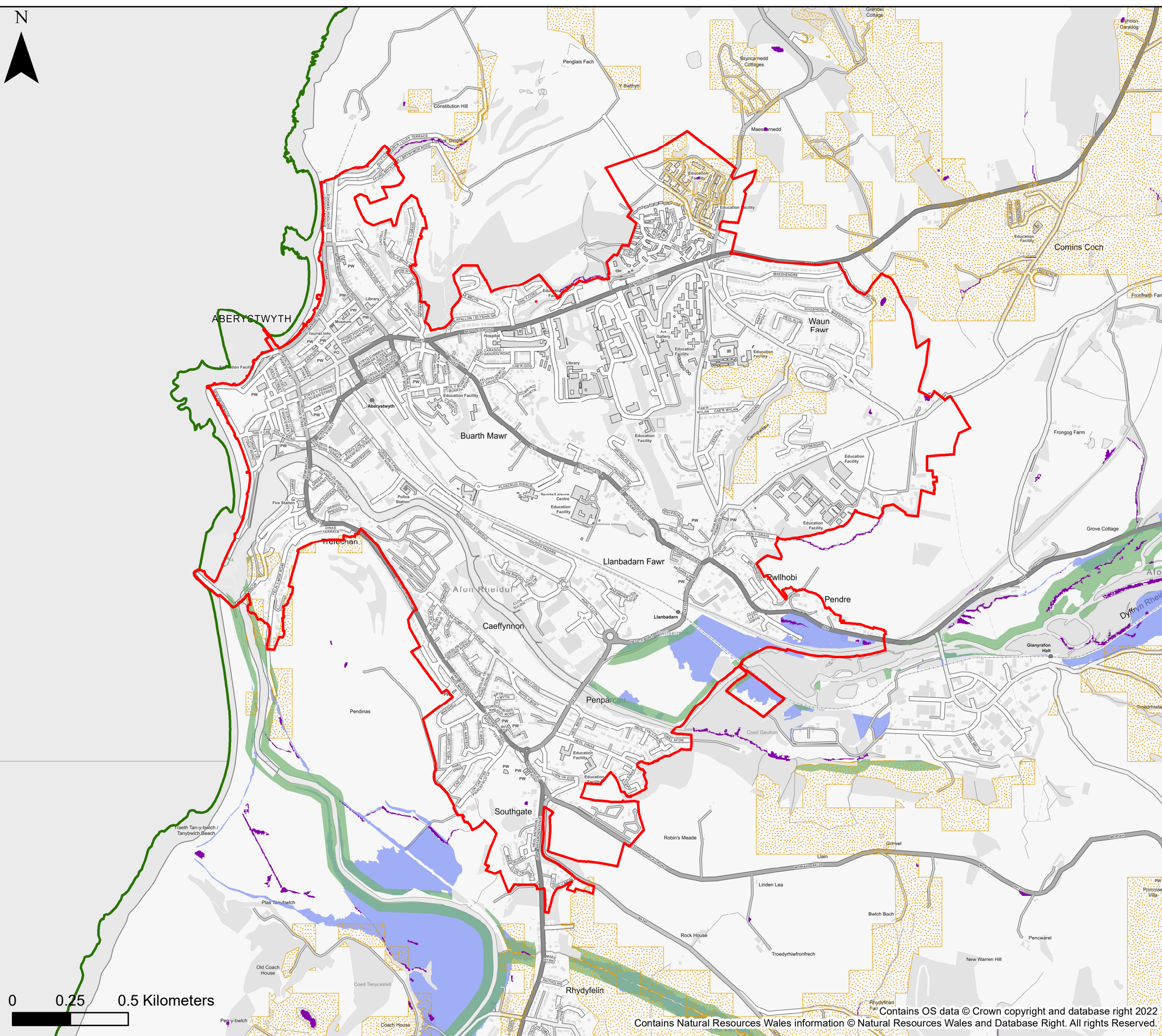




0 0.25 0.5 Kilometers



KEY

-  Ceredigion County Council
-  Settlement Boundary
-  Runoff Attenuation Features 1%
-  Wider Catchment Woodland Potential
-  Riparian Woodland Planting Potential
-  Floodplain Woodland Planting Potential

Notes
 This map shows areas for woodland planting potential and runoff attenuation features. The runoff attenuation features aren't shown on the authority wide overview maps. The map shows the flood risk data and information based on the map title and legend. If no data is displayed on the map, or not all features are present, this indicates that the respective flood source or features are not present within this area.



Cyngor Sir CEREDIGION County Council



JBA consulting

Ceredigion County Council Stage 1 Strategic Flood Consequences Assessment *Working with Natural Processes - Potential Mapping*

Settlement Area- Aberystwyth, Llanbadarn Fawr, Penparcau, Waun Fawr

This document is the property of Jeremy Benn Associates Ltd. It shall not be reproduced in whole or in part, nor disclosed to a third party, without the permission of Jeremy Benn Associates Ltd.

Drawn	HB	26/09/2022
Checked	CB	27/09/2022
Approved	GB	28/09/2022